

Image Processing for Retinal Blood Vessel Segmentation

Karianne Bergen[†], Jean-Baptiste Boin^{*}, Sahinaz Sanjani^{*}

^{*}Department of Electrical Engineering, [†]Institute for Computational and Mathematical Engineering, Stanford University

Motivation: Diabetic retinopathy is the leading cause of blindness among adults in US, preventable by retinal screening. Retinal blood vessel segmentation is an essential step for the diagnosis of diabetic retinopathy.

Original Image



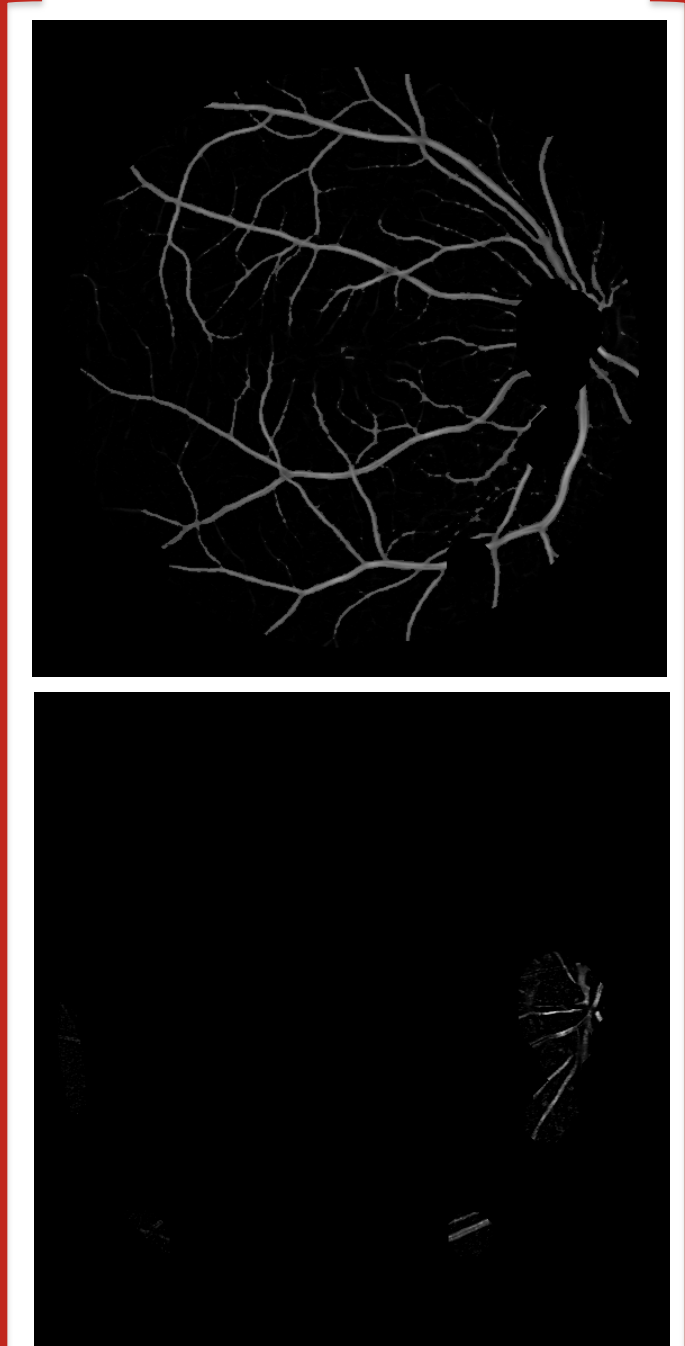
Matched Filtering

Line Detection

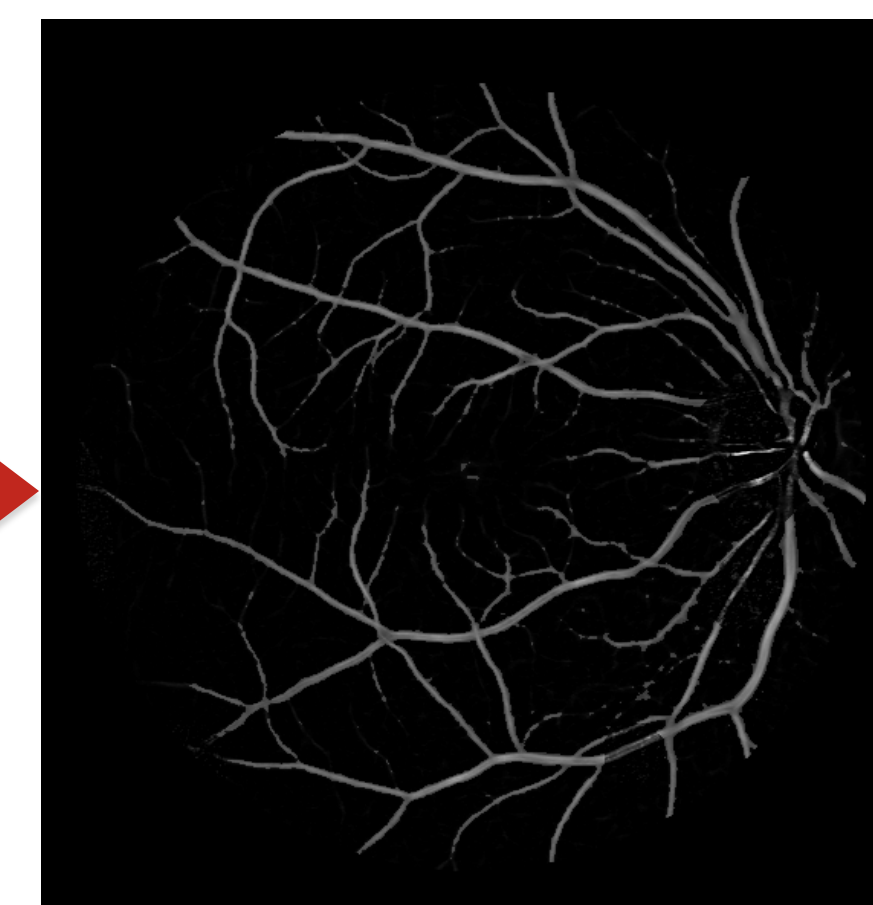
Neural Network

Scale Space

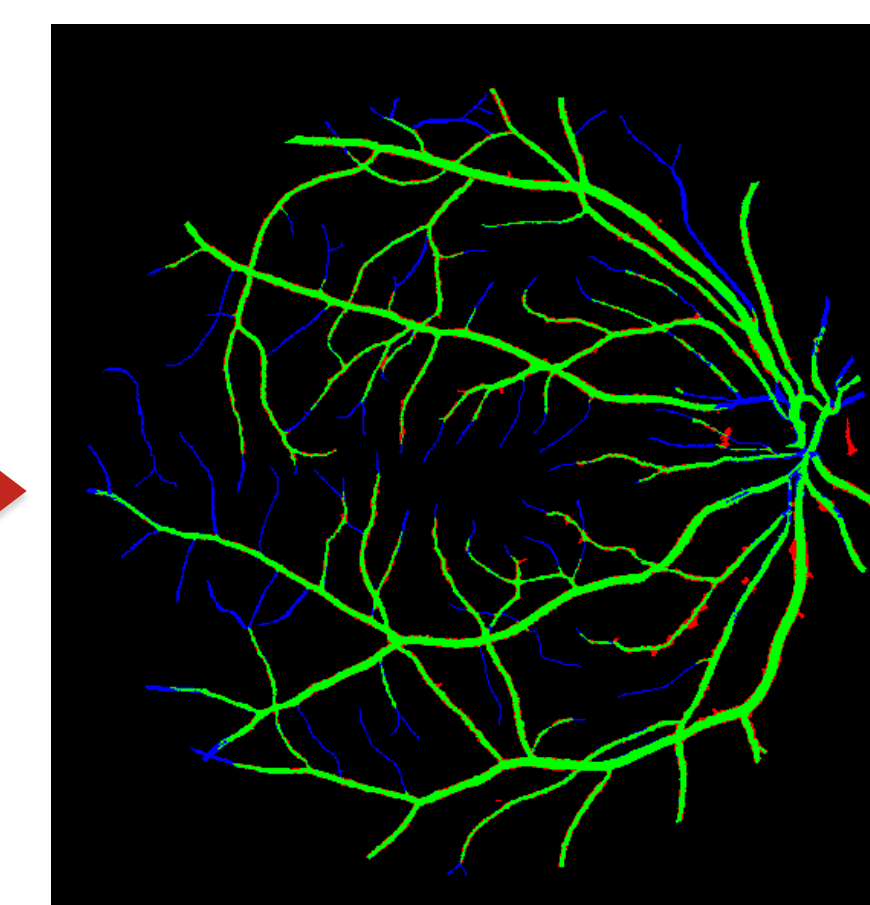
Morphological



Weighted Avg.

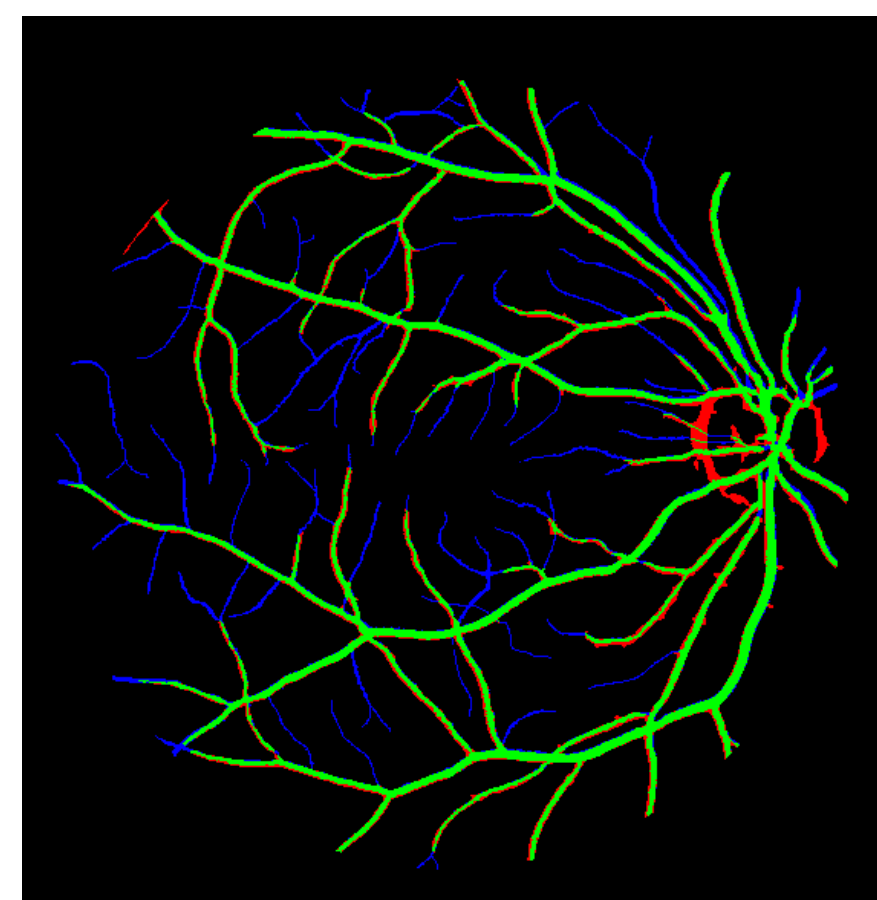


Final Image



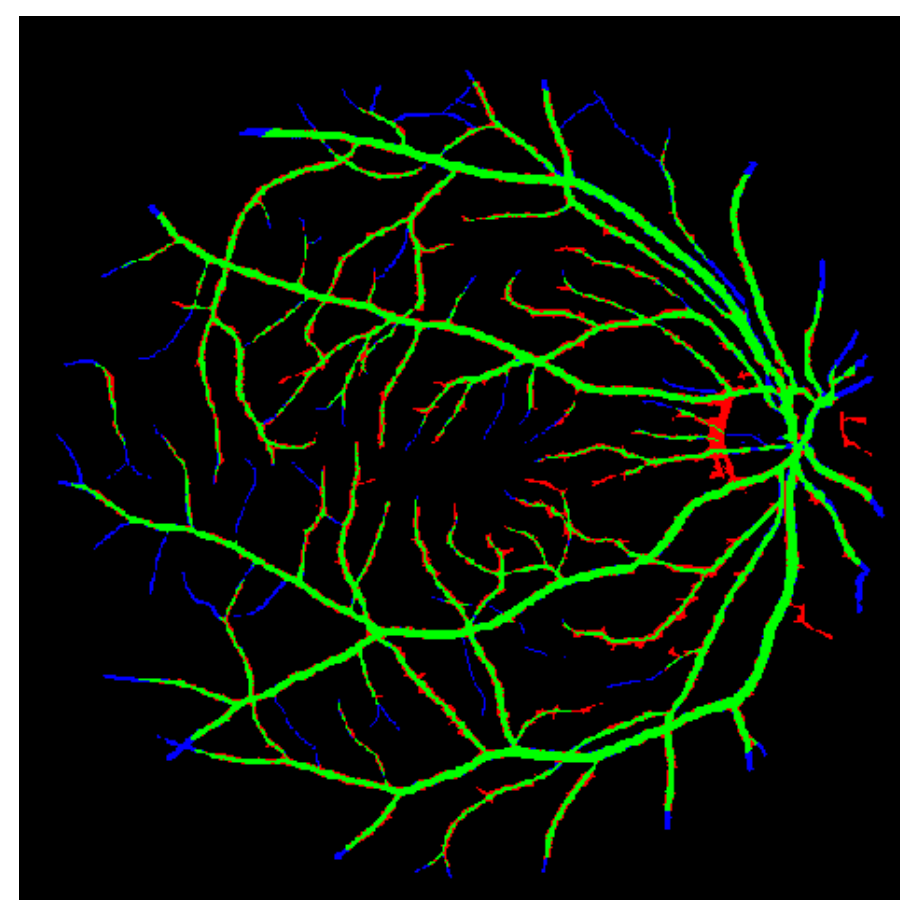
Optional Modification

Matched Filtering



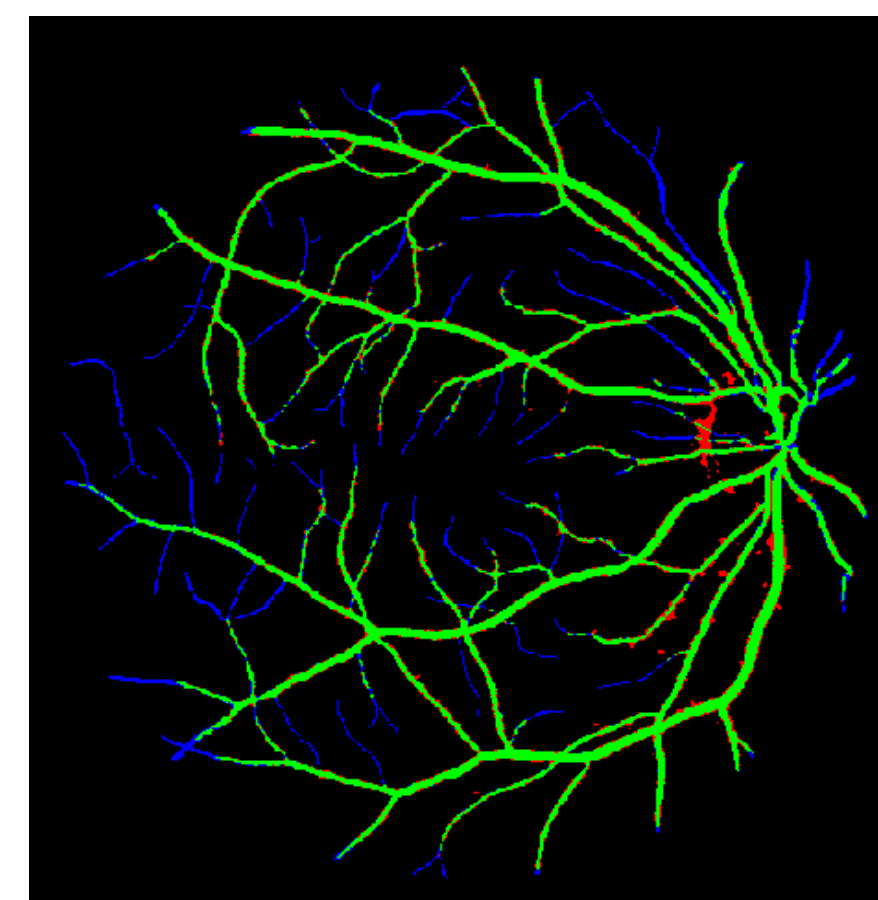
Gaussian shaped matched filters in 12 directions

Line Detection



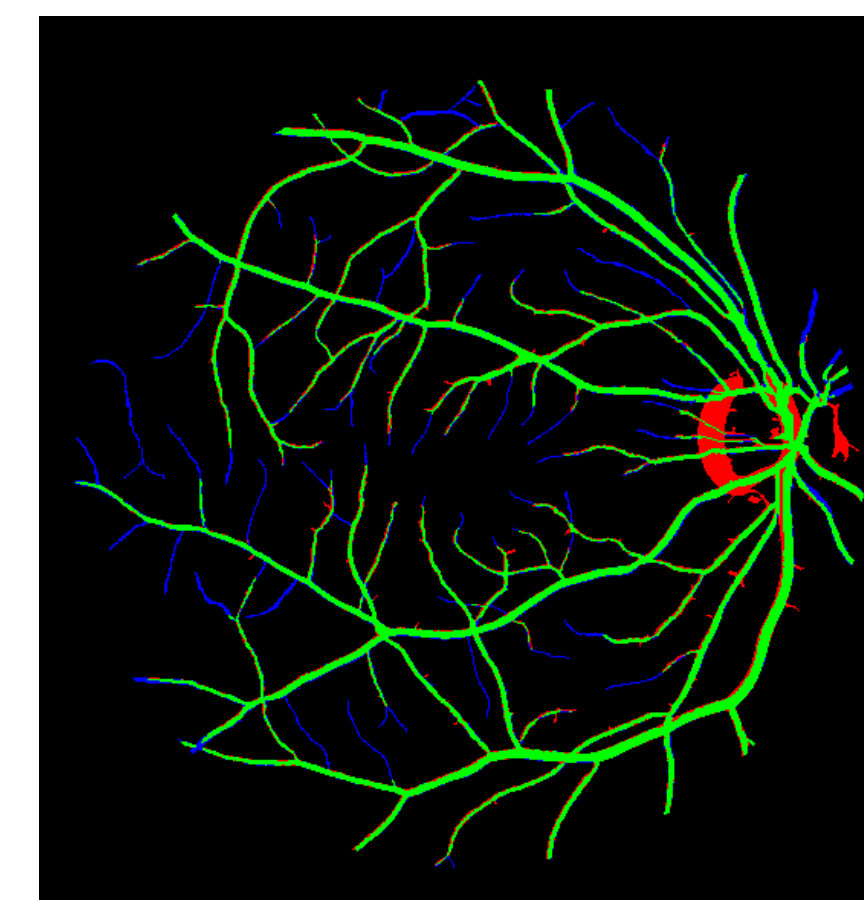
Line detection in 18 directions and at 7 scales

Neural Network



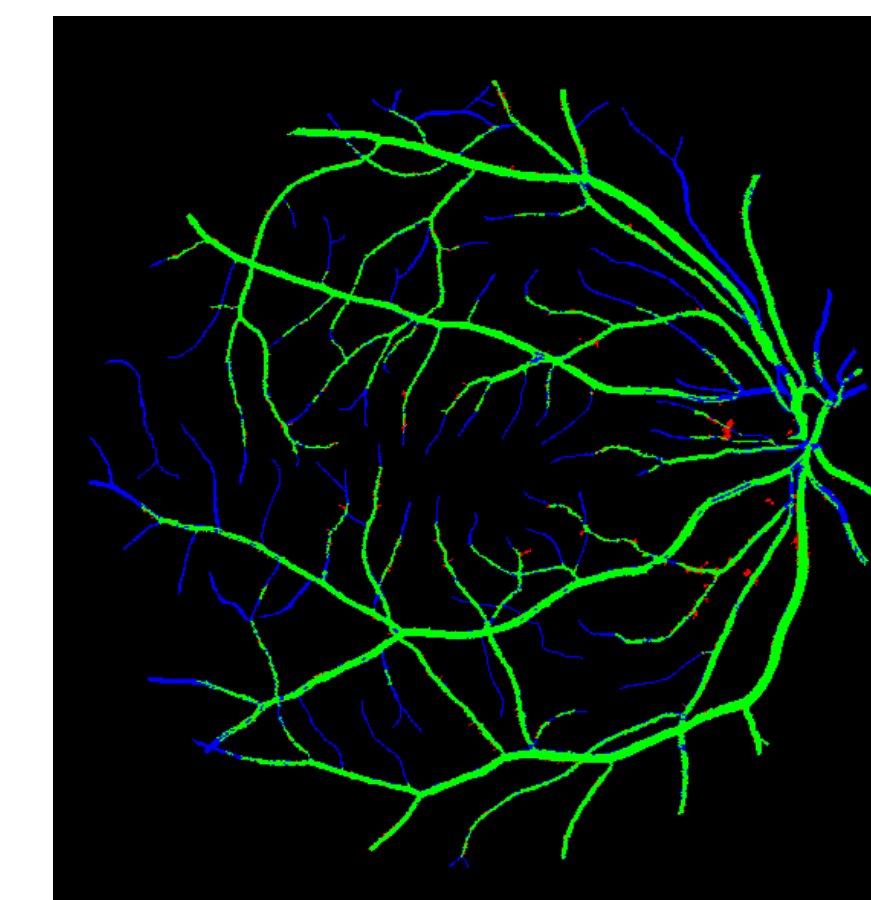
Classification with 7 features: gray-levels and invariant moments

Scale-space



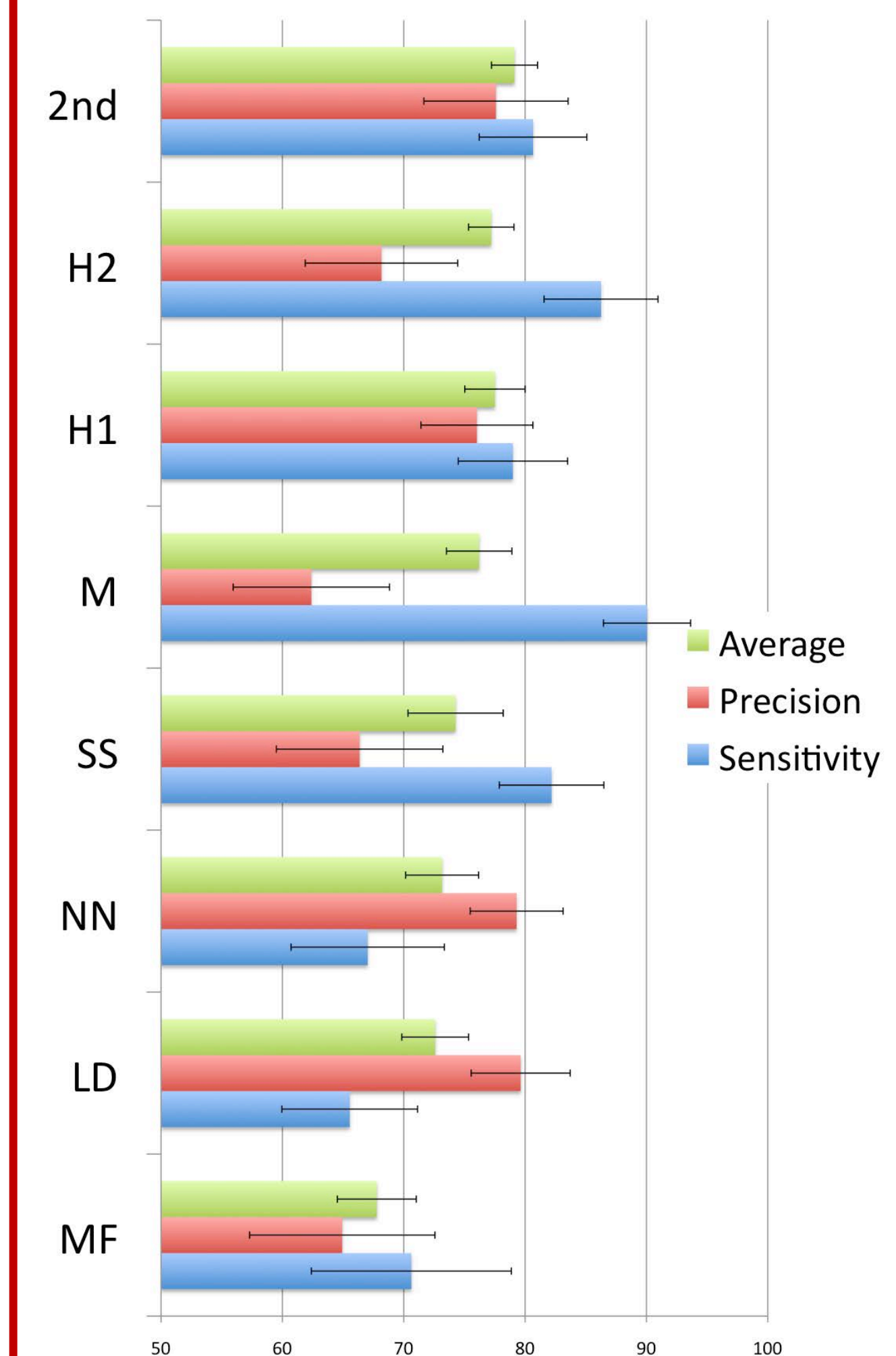
Scale-dependent representation for detector based on gradient & hessian

Morphological



Top-hat operation to keep only the prominent features

Results



MF: Matched Filtering
 LD: Line Detection
 NN: Neural Network
 SS: Scale-space
 M: Morphological
 H1: Hybrid Algorithm
 H2: Modified Hybrid Algorithm (fewer false negatives around the optical disk)
 2nd: hand-labeled vessel segmentation by a second observer